



THE RIVER PARKER

River Park Townhouses, Inc.,

January 2009

January–March

River Park Cooperative Townhouses

3999 A Topping
Kansas City, MO 64129

Staff

Site Manager

Cheryl Suttington

Maintenance Superintendent

Charles Hampton

Maintenance Technicians

Rick Hampton

Charles Price

Isaiah Edwards

BOARD OF DIRECTORS

Kay McKelvy, President

Anita Hampton, Vice President

Betty Donahue, Secretary

Trudy King-Elliott, Treasure

Leighton Moses, Member

Memberships for Sale...

We still have memberships on the market for sale. With tax season quickly approaching, talk to your friends about the possibility of them buying into River Park Townhouses, Inc. Not only is it a great investment for them, but if they are approved and move into the cooperative you receive a \$100.00 Finder's Fee.

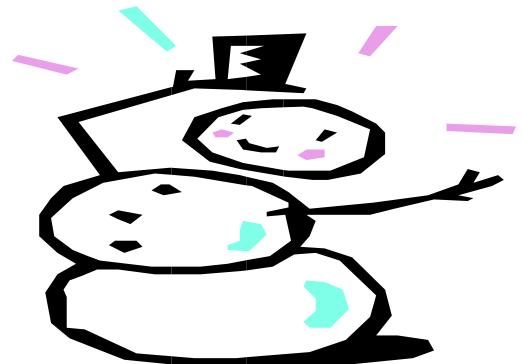
What a way to have some input into who you would like to have as a neighbor.

The Membership Fee is \$373.00 and there is a \$30.00 Application Fee for each member in the household over 18 years of age.

Upon Move-In the first months carrying charge and the Equity is required. The Equity varies with the unit. This is a negotiable amount.

We currently have both 2 & 3 Bedroom townhouses available, with equity starting as low as \$500.00 for 2 bedrooms. WHAT A DEAL!

Tell your friends to call the office and ask Cheryl about the specials and any additional questions they may have.



Parking Reminder

Members, are we following the rules when it comes to parking. Are we parking in our designated parking space? Are we the members parking in guest spaces and then wonder why another member is parked in our designated space.

Here's what the Vehicle Rule says, "All vehicles must be parked between the yellow lines. Each member is assigned a numbered space. The first car home is to park in the numbered space. Guest spaces are first come first serve. Do not tie up a guest spot for undo lengths of time. Vehicles are to be moved on a regular basis in guest spaces."

HAPPY NEW YEAR!

We wish you and yours the best of health, happiness and success.

Important Numbers

Office.....(816) 861-9200

Fax.....(816) 861-6761

Emergency Maint.....(913) 894-3744

FOR EMERGENCY DIAL 911

Security.....(816) 645-3001

Hours

Monday-Friday.8:00a.m.-5:00 p.m.

Closed - Lunch.12:00p.m.-1:00 p.m.

Saturday & Sunday.....Closed

WELCOME TO RIVER PARK!

Gwendolyn Cozart (6015)

Raquel Dupree (3919)

Brandon Temple & Kimberly Carrell
(5833)

Welcome to River Park!

We're So Glad you're Here!

The office will be closed on the following days...

January 1st, (New Years Day)

January 19th,

(Martin Luther King Day)

February 16th, (President's Day)



January 19th

New Year Recipe For Happiness

Take the fresh month, cleaned of all bitterness and jealousy and divide into 31 parts. Prepare pieces one day at a time. For each, mix generosity, courage and forgiveness. Blend with friendship and hope, and one good deed. Season abundantly with laughter, good spirits, and a sprinkle of fun. Bake with the warmth of love and serve daily with smiles.

Take the Yearly Dementia Test

It's that time of year to take an annual senior citizen test. Exercise of the brain is as important as exercise of the muscles. As we grow older, it's important to keep mentally alert. If you don't use it, you lose it! Below is a very private way to gauge your loss or non-loss of intelligence. Take the test presented here to determine if you're losing it or not. Don't look at the answers until you've made your answer.

1. What do you put in a toaster?

Answer: Bread. "If you said 'toast,' give up now and do something else."

2. Say "silk:" five times. Now spell "silk." What do cows drink?

Answer: Cows drink water. If you said "milk," don't attempt the next question. Your brain is over-stressed and may even overheat. Content yourself with reading a more appropriate literature such as Auto World. However, if you said "water," proceed to question 3.

3. If a red house is made from red bricks and a blue house is made from blue bricks and a pink house is made from pink bricks and a black house is made from black bricks, what is a green house made from?

Answer: Green houses are made from glass. If you said "green bricks" "Are you sure you should read these???" If you go on to Question 4.

4. It was twenty years ago, and a plane is flying at 20,000 feet over Germany (If you will recall, Germany at the time was politically divided into West Germany and East Germany.) Anyway, during the flight, two engines fail. The pilot, realizing that the last remaining engine is also failing, decides on a crash landing procedure. Unfortunately the engine fails before he can do so and the plane fatally crashes smack in the middle of "no man's land" between East Germany and West Germany. Where would you bury the survivors? East Germany, West Germany, or No Man's land?

Answer: You don't bury survivors. If you said ANYTHING else, you must stop. If you don't bury survivors, proceed to the next question.

5. Without using a calculator—You are driving a bus from London to Milford Haven in Wales. In London, 17 people get on the bus. In Reading, six people get off the bus and nine people get on. In Swindon, two people get off and four get on. In Cardiff, 11 people get off and 16 people get on. In Swansea, three people get off and five people get on. In Carmarthen, six people get off and three get on. You then arrive at Milford Haven. What was the name of the bus driver?

Answer: Oh, for crying out loud! Don't you remember your own name? It was YOU!!!

PS: 95% of people fail most of the questions!!

Charges to members...

A reminder to the membership of charges you are responsible for:

Lock Outs during office hours \$5.00.

After hours lock outs \$30.00.

Repairs due to member's negligence.

Broken glass or screens.

\$50.00 Late fees after 4:30pm on the 10th.

You may waive one late fee each 12 mos. With written request. Attorney Referrals \$246.00 /\$282.00 plus any other charges resulting from your account being sent to the attorney, i.e. letters, filings, phone calls and photocopies. Once an account goes to the attorney, you will receive no additional notices from the site office until the balance is paid.

Free Tax Help

Free Tax help will be available through United Way. Volunteers are brought in and trained by the IRS to prepare basic federal and state income taxes. Call United Way information and referral line to get dates, times and location, if you want free help. All sites will be open until or near April 15th, which is the filing deadline for federal and state income taxes. Call United Way information line at (816) 474-5112 or *211 on certain mobile providers.

MAINTENANCE

Don't forget—Ice melt is available to members at no charge. If you leave early in the morning, before the sidewalks get shoveled, you can bring a small container to the maintenance shop and get some snow melt to throw out on the slick spots. Reminder: The first priority is to shovel the driveways; you may need to move your vehicle so the plow can get to those difficult areas. There must be 2 spaces in the front and rear of the plow truck in order to do the parking spaces. When vehicles are moved they are able to do the entire lot. The second priority is to shovel the main sidewalks. The last priority is the individual walks and steps. Thanks to all of you who shovel your own steps. And a special thanks to those of you who shovel the steps of an elderly neighbor.

Happy Birthday River Park Members

January

Ruqaiyah H.	1
Cameron G.	2
Meya A.	3
Freddie B. Jr.	4
Shakiya L.	4
Dominique S.	4
Serenity W.	4
Seedy D.	5
Andrea S.	5
Ayana S.	5
Ida C.	7
Kevion R.	7
Aleah W.	8
Barbara C.	9
England W.	13
Crystal H.	15
Steven B.	16
Yvonne D.	18
Charles H.	20
Vincent F.	23
Gwendolyn C.	23
Ronald M.	23
Carolyn W.	24
Audery E.	25
Arletha F.	25
Takeitha C.	27
Marlean D.	27
Gary G.	27
Vincent L.	27
Diane C.	28
Stephon L.	28
Rodney C.	31

February

Donna D.	2
Bryonna C.	2
Rodney H.	2
Adrian C.	3
Betty D.	4
Gwendolyn C.	5
Yasmin K.	5
Briana B.	8
Michael S.	8
Andrea P.	10
Sidney P.	12
Yhani A.	13
Phillip K.	13
Sherenna C.	15
Rakeisha H.	15
Raneisha H.	15
Latonia H.	17
Joshua L.	17
Eric R.	18
Cheryl S.	20
Louis R.	22
Larry G.	24
Lillian W.	25
Talicia M-F.	26
Cheyenne A.	27

March

Matti D.	1
Al'eysha B.	2
Shirley P.	2
Renna G.	3
Leadrewis H.	3
David M.	4
Callie O.	6
Valesta R.	8
Sharrecia C.	9
Tracy M-N.	10
Rickey L.	12
Frederick B.	12
Ella H.	12
Charlotte F.	13
Helen G.	13
Jackson W.	15
Mary W.	15
Latoya W.	15
Ricky H.	15
Ayanna H.	16
Tamika M.	16
Clarence B.	17
Cashunda T.	17
Brian C	19
Marland T.	21
Lela S.	21
Marie W.	21
Carmen F.	22
Janet B.	23
Eric P.	23
Clinique O.	24
Patricia B.	25
Consondra H.	25
Tammie P.	27
Michael B.	28



Our Condolences go out to Mr. Gray (6030), In the loss of his brother, James "Jimmy" Edward Gray.

Get Well
wishes for
SPEEDY
RECOVERIES

January 2009

SUN	MON	TUE	WED	THU	FRI	SAT
				1 Carrying Charges Due New Year's Day Office Closed	2	3
4	5	6	7	8 New Member Orientation 6:00 PM	9	10
11	12 Carrying Charge due 8:30am	13 \$50 Late Charge	14	15	16	17
18	19 Martin Luther King Jr. Day Office Closed	20 Inauguration	21	22 Attorney Referrals	23	24
25	26	27 Bingo 11:00 AM	28	29	30	31

February 2009

SUN	MON	TUE	WED	THU	FRI	SAT
1 Carrying Charges Due	2  Ground Hog Day	3 Monthly Board Meeting 6:00 PM	4	5	6	7
8	9	10 Carrying Charge due 4:30pm	11 \$50 Late Charge	12 New Member Orientation 6:00 PM	13	14  Valentine's Day
15	16 President's Day Office Closed	17 DTV	18	19	20	21
22	23 Attorney Referrals	24 Bingo 11:00 AM	25	26	27	28

March 2009

SUN	MON	TUE	WED	THU	FRI	SAT
1 Carrying Charges Due	2	3 Monthly Board Meeting 6:00 PM	4	5	6	7
8  Daylight Saving	9	10 Carrying Charge due 4:30pm	11 \$50 Late Charge	12 New Member Orientation 6:00 PM	13	14
15	16	17  St. Patrick's Day	18	19	20  Spring	21
22	23 Attorney Referrals	24	25	26	27	28
29	30	31 Bingo 11:00 AM				