



Sun	Mon	Tue	Wed	Thu	Fri	Sat
						1 Carrying Charges Due
2	3	4	5	6	7	8
9	10 Carrying Charges Due by 4:30pm	11 Add Late Fee New Member Orientation 5:30pm	12	13	14	15 Clubhouse Reserved
16	17	18 EXTERMINATIONS SECTION 4	19	20	21 Attorney Referrals	22 Clubhouse Reserved
23	24	25 Board Meeting Open Session 6-6:30pm	26	27	28	29
30	31 					



River Park Cooperative Townhouses
3999A Topping Avenue
Kansas City, Missouri 64129
www.riverparktownhouses.com

BOARD OF DIRECTORS:
Anita Hampton, *President*
Barbara Graham, *Vice President*
Phyllis Hannah, *Secretary*
LaConda Murphy, *Treasurer*
Tonya Tillman, *Member*

ORIENTATION COMMITTEE:
Ida Crosby * Frances Watson

STAFF:
Cheryl Suttington *Site Manager*
Maint Superintendent
Charles Hampton
Assistant Maint Superintendent
Rick Hampton,
Maintenance Technicians
Bob Price * Isaiah Edwards
Marvin Hampton

Professionally Managed by:
Keli Management



COZY LEAVES
SERVES
fALL
cool air Hot cocoa
PUMPKINS

October is National Breast Cancer Awareness Month!

Around River Park...



River Park is launching a Tutorial Program for the Youth of River Park. The help of Volunteers are needed as Tutors. For additional information, contact Anita Hampton, Youth Committee Chairperson (816) 716-2931.



River Park's Annual Fall / Halloween Event!
Monday October 31st, RP Clubhouse
 Everyone is encourage to come Dressed in their Halloween Best!
 (Adults included)
Entertainment starts at 6:00pm
 Watch for the upcoming flyer!
VOLUNTEERS NEEDED

Shine...Shine...Shine...



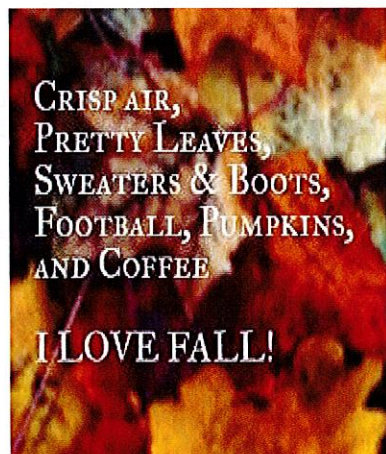
So much is going on around us, River Park has been fortunate. Every so often we like to remind our Members that we are our best Security. If you've noticed the days are getting shorter, making it dark earlier. It's time we ask members JOIN TOGETHER with your Neighbors: **Porch Lights Unite!!!** Turn on your Porch Lights... Its time to SHINE! Remember the three L's of Crime Prevention: **L**ight up your residence, **L**ock your doors at all times, and call the **L**aw when you see suspicious activity. Crime tends to decline in neighborhoods that are well lit. **GO AHEAD... LET YOUR LIGHT SHINE!**

Board Meeting
October 25th
Open Session at 6:00



Welcome New Neighbors are Coming...

- 3969 Topping---Sold
- 5805 East 40th Terrace---Sold
- 5810 East 40th Terrace---Sold
- 5908 East 40th Terrace---Sold
- 5937 East 40th Terrace---Sold
- 6021 East 40th Terrace---Sold
- 6030 East 40th Terrace---Sold



IMPORTANT PHONE NUMBERS:

- River Park Site Office (816) 861-9200
- River Park Fax (816) 861-6761
- Keli Management (816) 216-1862
- Emergency Maintenance (913) 894-3744
- North K.C. Bureau of Inv. (816) 471-2335
- Non-Emergency Police (816) 234-5530
- Emergency 911



Michael B.	1	Dedon R.	8	Carter P.	18
Tommy S.	2	Yolanda W.	9	Lylah P.	19
Sydney G.	2	Rodney C.	9	Tyrone J.	20
Tailor R.	4	Mike L.	12	Michael M.	24
William M.	5	Taciana C.	15	Jacqueline S.	25
Jordan G.	5	Robin W.	15	Michael J.	25
Dominique B.	5	Natalie W.	15	Lashelle J.	25
Demi W.	5	Quentin Y.	16	Bob P. (Maint)	27
Dominique C.	5	Tiffany D.	17	Jabarri R.	28
Ike E. (Maint)	7	Candace C.	18	Meisha F.	31
Porchia J.	8				

TURNING UP THE HEAT....
 When the weather cools down, the heaters come on. Don't be concerned if the first time you run yours, you notice a slight odor. That is just the dust burning off the coils and it is not unusual or dangerous. However, if your heater is not working properly, please let us know so we can correct the problem before it gets really cold!

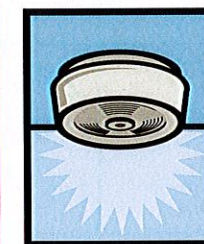
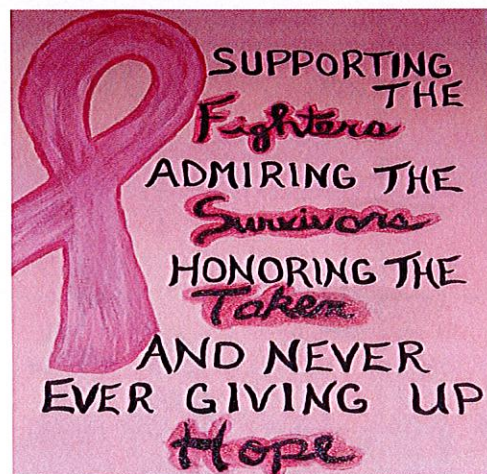
Please Drive Cautiously

The youth of River Park has gone back to School for the 2016-2017 School year.



Remember, that means school buses and more youth walking. Drivers, please watch for children waiting for buses or rides to school. Children, please be careful and watch for vehicles on your way to school.

There have been calls regarding visitors and yes, even Members parking in other members numbered parking spaces. Members are responsible for their guests complying with River Park's Rules and Regulations while visiting. This is a Cooperative so please Cooperate by making sure you and your guests are not parked in another Member's parking space!



Please be Reminded of the Policy passed July 1st, 2010. "A \$25.00 Charge will be applied to Members who have tampered with their Smoke Detectors..."

It is important that your smoke detector is functional, not only for your protection but for your neighbors as well. Having a working smoke detector in your home decreases your risk, as does having a fire escape plan. Please take this seriously. If your detector is malfunctioning or you need the batteries replaced, let us know—we will be happy to send someone to your home to take care of the problem. If we notice your smoke alarm has been tampered with ie; taken down, it is a \$25.00 charge to you the member. Please make sure your smoke detector is always working.