



# October

Sun	Mon	Tue	Wed	Thu	Fri	Sat
1 Carrying Charges Due	2	3	4	5	6	7
8	9	10 Carrying Charges Due by 4:30pm	11 Add Late Fee			14
15	16	17  <b>EXTERMINATIONS SECTION 2</b>	18			21 Attorney Referrals
22 Clubhouse Reserved	23	24 Board Meeting Open Session 6-6:30pm	25	26	27	28
29	30	31 				



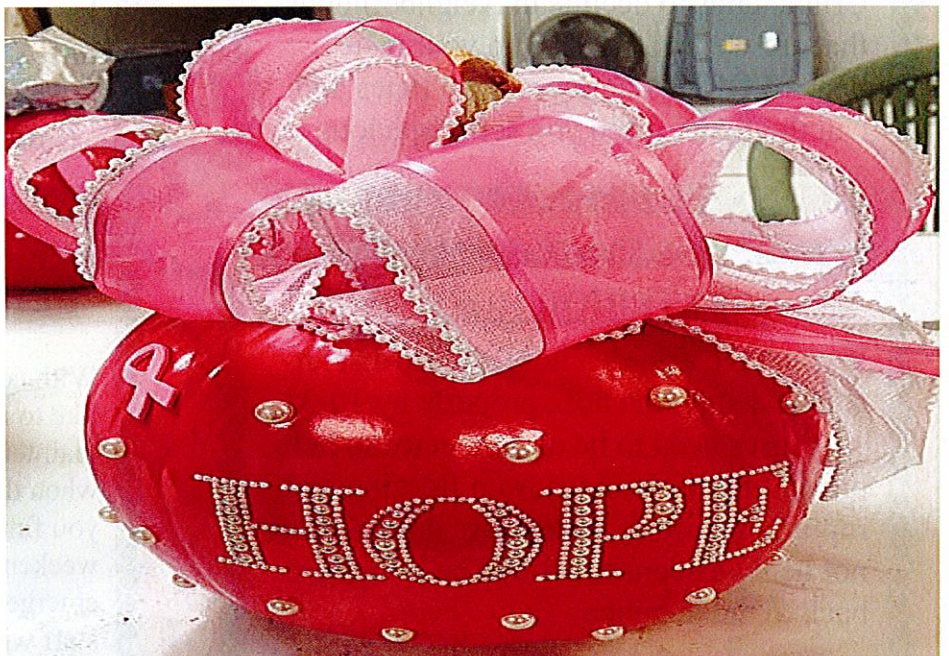
River Park Cooperative Townhouses  
3999A Topping Avenue  
Kansas City, Missouri 64129  
www.riverparktownhouses.com

**STAFF:**  
 Cheryl Suttington Site Manager  
 Brenda Garrett Office Assistant  
 Maint Superintendent  
 Charles Hampton  
 Assistant Maint Superintendent  
 Rick Hampton,  
 Maintenance Technicians  
 Bob Price \* Isaiah Edwards  
 Marvin Hampton

Professionally Managed by:  
Keli Management

**IMPORTANT PHONE NUMBERS:**  
 River Park Site Office (816) 861-9200  
 River Park Fax (816) 861-6761  
 Keli Management (816) 216-1862  
 Emergency Maintenance (913) 894-3744  
 North K.C. Bureau of Inv. (816) 471-2335  
 Non-Emergency Police (816) 234-5530  
 Emergency 911

**Fall is Here!**

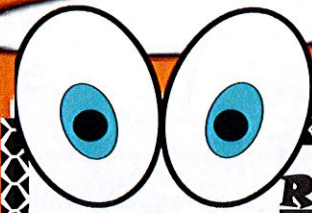


  **Ready, Set, GO PINK!**

**October is National Breast Cancer Awareness Month!**



# Around River Park...



## RIVER PARK'S ANNUAL FALL EVENT!!

Watch for the Flyer Announcing this years Annual Fall Event. Its always on Oct. 31st, **Halloween!!** Always a Kid safe Environment... Annnnd Always Lots of Fun for Everyone... The Site Office will be accepting donations for party snacks... Volunteers are always needed.



### WELCOME

Patricia M. (3947)  
Welcome to River Park,  
We're so Glad you're Here!!!

Get Well Soon Members



# Happy Birthday!

Michael B.	1
Sydney G.	2
Jerald d	3
Tailor R.	4
William M.	5
Jordan G.	5
Dominique B.	5
Demi W.	5
Dominique C.	5
Ike E. (Maint)	7
Porchia J.	8

Dedon R.	8
Yolanda W.	9
Rodney C.	9
Mike L.	12
Jaile F	12
Taciana C.	15
Robin W.	15
Quentin Y.	16
Tiffany D.	17
Candace C.	18

Carter P.	18
Lylah P.	19
Tyrone J.	20
Michael M.	24
Jacqueline S.	25
Michael J.	25
Lashelle J.	25
Bob P. (Maint)	27
Jabarri R.	28
Elijah D	28
Meisha F.	31



### PORCH LIGHTS ON

Always lock your vehicle and your unit doors. Have you noticed the days are getting shorter, making it dark earlier. We ask members to turn on your porch lights. Crime tends to decline in Neighborhoods that are well lit. **LIGHT** up your residence **LOCK** your doors at all times and call the **LAW** when you see suspicious activity.



### FALL CLEAN UP

With leaves already falling, fall weather is upon us, winter weather is not too far behind, it is time to start thinking about your flower beds. After the "Big" frost, most of the annual flowers planted will need to be pulled. Please help River Park continue to look neat and clean by taking care of your flower bed areas.

### EXTERIOR HOSE

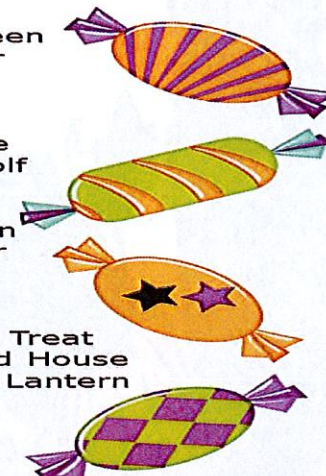
If you have a garden hose, please disconnect and store the hose properly by 10-31-17. Hoses need to be disconnected to help prevent the water lines from freezing and rupturing. Any damage cause due to hoses not being disconnected will be charged back to the member.

### HELP! No Heat/Furnace Maintenance

With colder weather approaching, we would like to remind you that it is considered a maintenance emergency if you have no heat when the temperature is below 50 degrees. If you find yourself in this situation after hours, weekends and holidays, call the maintenance emergency number at 913-894-3744 and the staff will respond as soon as possible.

## HALLOWEEN WORD SEARCH

- Halloween
- October
- Spooky
- Scary
- Ghost
- Vampire
- Werewolf
- Witch
- Zombie
- Skeleton
- Monster
- Black
- Orange
- Candy
- Trick or Treat
- Haunted House
- Jack O' Lantern
- Boo
- Spider
- Bats



Y	W	I	A	T	C	H	D	Y	R	A	C	S	J	W	K	
L	J	H	E	G	H	O	L	A	N	T	H	S	K	A	R	E
N	R	E	T	S	N	O	M	A	P	K	L	O	E	I	B	
O	O	S	U	E	D	R	L	I	R	B	J	P	B	B	B	
T	O	U	V	M	R	L	D	P	S	E	Z	V	O	M	O	
E	B	O	Z	V	O	E	G	B	G	H	C	A	T	O	N	
L	A	H	L	W	R	I	E	N	A	W	F	M	C	O	Z	
E	T	D	E	Y	A	R	A	Y	E	J	P	O	S	T	S	
K	S	E	T	A	E	R	T	R	O	K	C	I	R	T	O	
S	N	T	K	K	O	Q	E	Y	I	O	T	R	J	O	Q	
I	Y	N	X	L	U	W	D	P	X	O	Z	E	O	Q	B	
K	M	U	E	S	O	N	T	I	N	P	S	K	F	B	B	
M	N	A	U	L	A	L	V	C	M	S	X	K	C	P	B	
J	E	H	F	C	T	F	J	K	T	G	B	N	N	B	B	

Q: Which Ghost is the best dancer?  
A: The Boogleman.

THERE WAS A PICTURE IN MY PHONE OF ME SLEEPING. I LIVE ALONE.

Q: What's a Monster's favorite desert?  
A: I-Scream.



## Board Meeting October 24th

The Board and Management would like to thank the members who attends the open session at the Monthly Board Meeting. Your comments/suggestions are appreciated and welcomed.