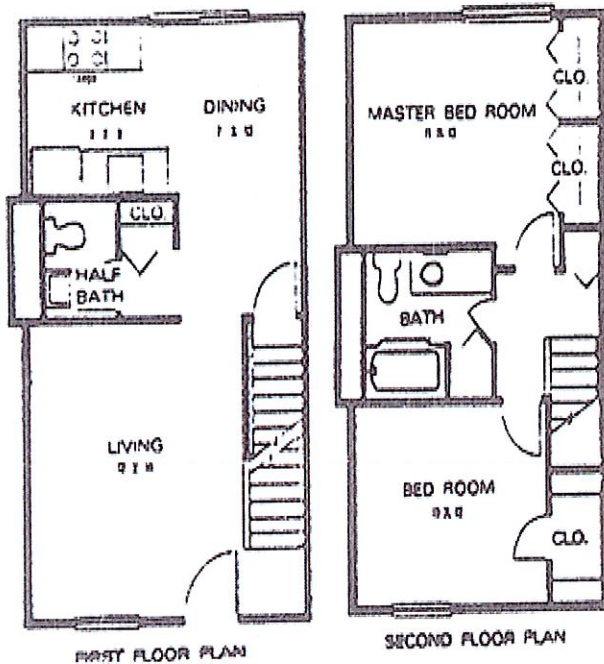
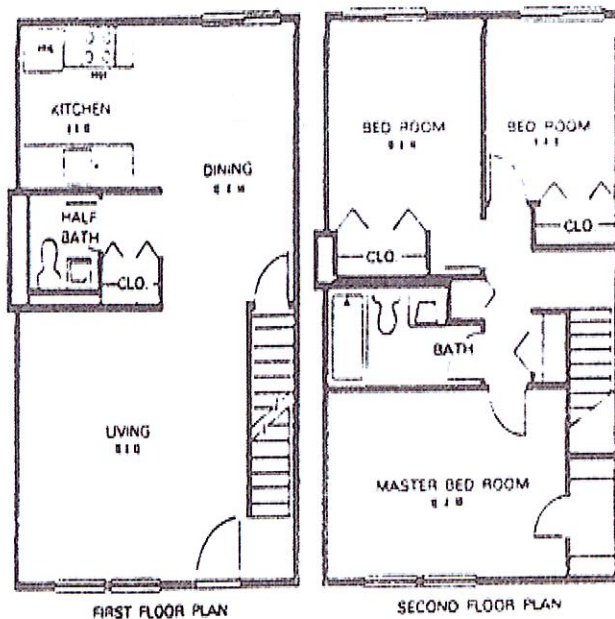


2 BEDROOM FLOOR PLAN WITH FULL BASEMENT



3 BEDROOM FLOOR PLAN WITH FULL BASEMENT



Convenient to the City...

Within minutes of:

I-70

I-435

The Plaza

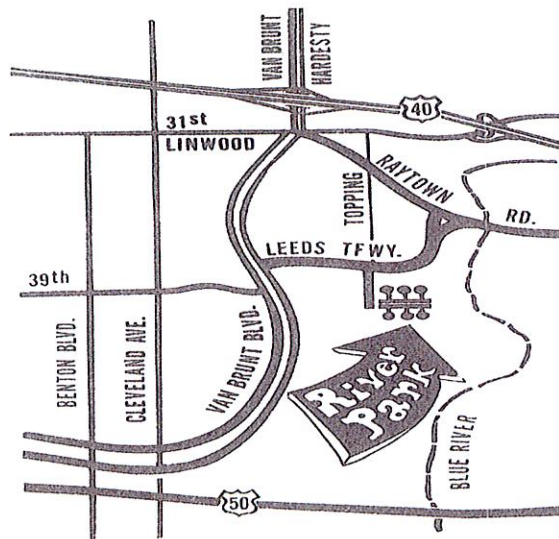
Westport

Crown Center

Power & Light District

Services Provided...

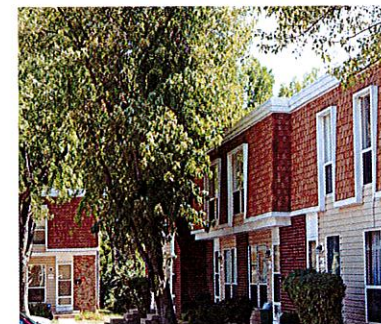
- Snow Removal
- Lawn Mowing
- Water and Sewer
- Stove and Refrigerator
- Dining Room Ceiling Fan
- Garbage Disposal
- Central Air
- Trash Removal
- Night Security Patrol
- Building Maintenance



River Park Townhouses, Inc.

"A Housing Cooperative"

**THE PRIDE OF
OWNERSHIP...
THE CONVENIENCE OF
RENTAL ...**



River Park Townhouses, Inc.

3999A Topping

Kansas City, MO 64129

816-861-9200



2 BEDROOM TOWNHOUSES:

\$593—\$599/ MONTH *

3 BEDROOM TOWNHOUSES:

\$633—\$639/ MONTH *

Low Buy in starting at \$500

*Includes water, sewer, and trash pick up

AMENITIES INCLUDE:

- Full Basements
- Central Air Conditioning
- Stove and Refrigerator
- Metro Bus and School Bus Service
- Snow Removal/Lawn Mowing
- Night Security Patrol
- Convenient Access to I-70 & 435
- Maintenance Services
- Easy Access to Downtown and Stadiums



WHAT IS A COOPERATIVE?

A community which is owned and operated by the people that live there; or a business owned by the people who use it. Each member of the River Park Townhouses has an equal vote in the cooperative corporation, which holds title to the property. A Board of Directors is elected from within the Coop by the members of the Coop. The board establishes standards to keep the community a pleasant place to live and sets down those standards in the "Rules We Live By".

IS IT LIKE RENTING?

Yes, in terms of convenience. You make one payment a month without worrying about insurance, taxes, mortgage payments, or maintenance.

HOW CAN I BECOME A MEMBER?

Fill out an application to have your name added to the waiting list and make a \$24 deposit. When it is your turn and a unit is available for you, arrangements will be made to show you the unit. If you wish to buy that membership and the improvements made to that unit you must make an appointment with the Coop office to fill out the Application for Membership forms. A \$373.00 membership fee is paid upon making application for membership. The equity and first month's carrying charges (rent) are paid on the day you take possession of the unit. The improvement price is between the buyer and seller. It takes about two weeks for your application to be processed. Upon being notified of approval of membership, you will also be given the amount of equity due upon Move-In. The carrying charges are pro-rated and you are charged only for the number of days that you have possession during the month.